



# **Disassembly and Model Identification Guide**

[www.consolesbyvga.com](http://www.consolesbyvga.com)

**Introduction:**

In this guide we will walk you through the necessary steps to identify the model of your console, and the type of CD drive your console has.

Both pieces of information will be required to properly install a Phantom Universal mod chip into a Sega Saturn console.

**Tools Required:**

Medium Philips head screw driver with medium length shaft.



## Step 1 – Model Identification

The Sega Saturn had 2 different Models in its life span.

Luckily for us, it's pretty easy to determine what model of console you have.

By simply visually inspecting the consoles we can look at the consoles power and reset buttons to determine the model.

### MODEL 1 CONSOLE – OVAL POWER & RESET BUTTONS

**NOTE: There is a very rare chance that this console shell (Oval Power and Reset Buttons) will have Model 2 Internals. If you come across this shell and it has a CD Drive with a 64 Pin IC, it is a model 2 that utilizes a 21 Pin ribbon cable and you should follow the Model 2 JVC Drive Guide.**



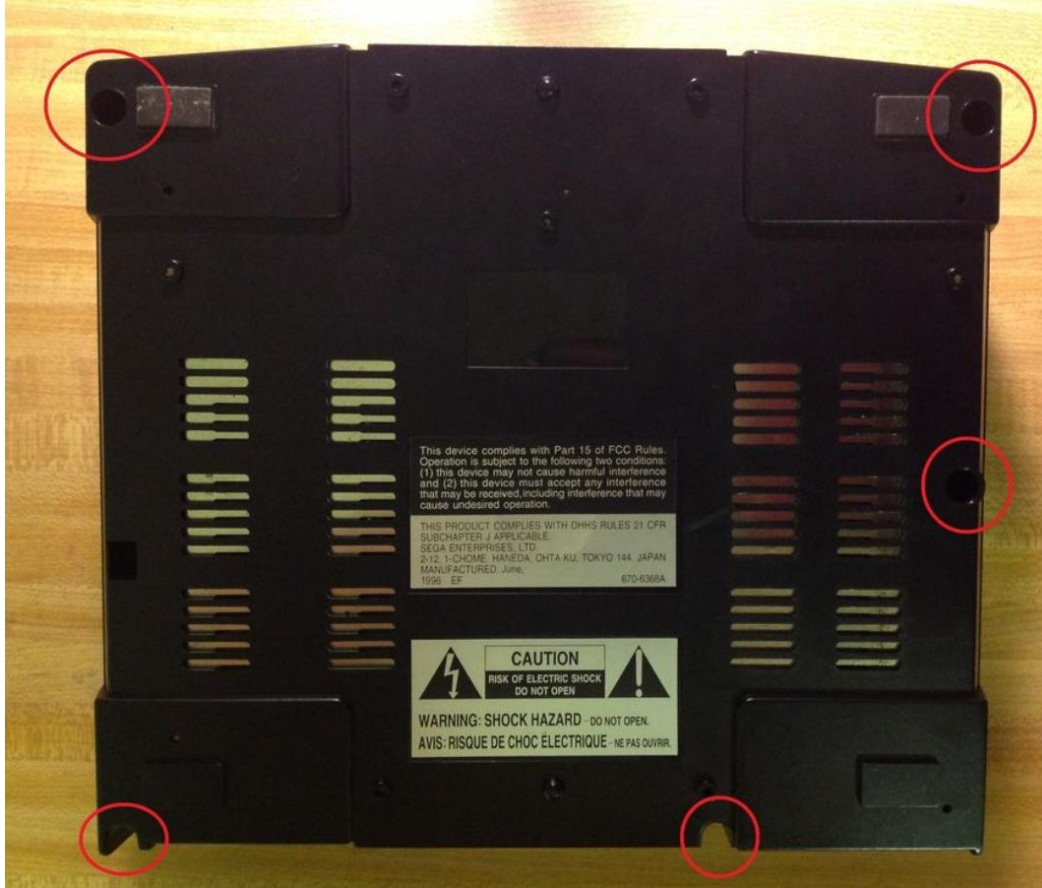
### MODEL 2 CONSOLE – ROUND POWER & RESET BUTTONS



## Step 2 – Top Shell Removal

To determine the type of CD-Rom drive the console has, we will need to remove the top shell from the console.

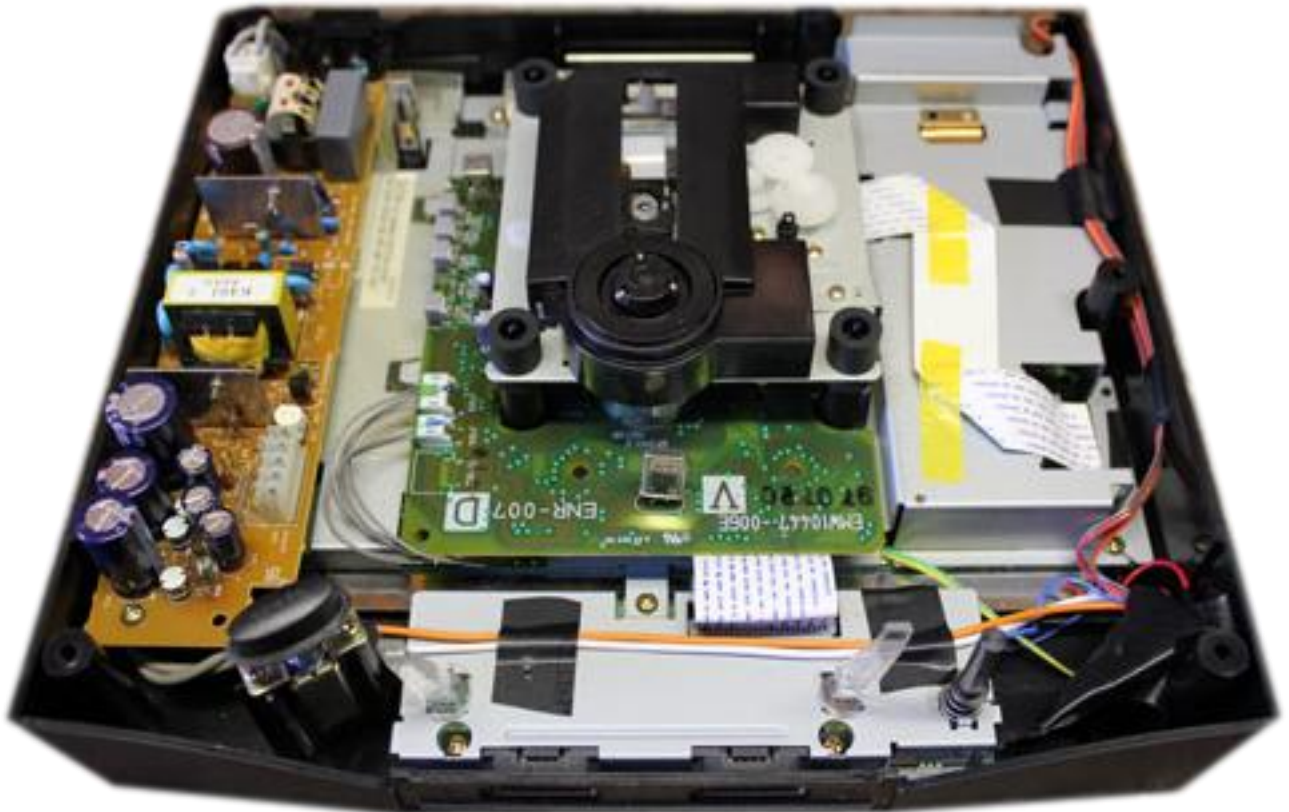
- 1) Flip the console over and locate the 5 screws that need to be removed.



- 2) Gently turn the screws to the left, counter clockwise, to loosen them.  
The screws are all of the same length and size, so you do not need to keep track of which screws go where.
- 3) Once all of the screws have been removed, hold the bottom and the top of the console together tightly and flip the console back over. We do not want to remove the bottom of the console when it's upside down.
- 4) Once the console is face up again, gently remove the top lid from the console. If it does not come off easily, you have missed a screw, or there is a CD in the console. The lid should remove with little to no effort.

### Step 3 – Drive Identification

Once the lid is removed, you should be looking at something similar to the image below.



As you can see from the image above, this is a Model 1 console.  
(Oval Power button. Reset button was oval too, but it's not in the image.)

We can however further validate this by looking at the ribbon cable that connects the CD-Rom drive to the motherboard, as well as the IC PIN Chip, or the lack there of.

## Step 4 – Identifying Drive Type

### Model 1 Consoles:

#### Console Buttons:

Model 1 Consoles have Oval Power and Reset Buttons.

#### CD- Rom Circuit Board Color:

Green

#### Ribbon Cables:

Model 1 Consoles have 20 Pin Ribbon Cables.

#### IC PIN Chip:

Model 1 Consoles have NO IC PIN chip.



The IC Chip Location is in the lower left hand corner of the circuit board, just to the front of the CD-ROM drive. We have highlighted the location with a red box in the image above.

Note, this drive was taken from a Model 1 console, so no IC Chip exists in this location.

If you have a Model 1 Console...

Download: [PhantomUniversal\\_Model1\\_Install Guide.pdf](#)

[www.consolesbyvga.com](http://www.consolesbyvga.com)

## Step 4 – Identifying Drive Type

### Model 2 Saturn: - JVC Drives:

#### Console Buttons:

Oval (Very rare) or Round Power and Reset Buttons.

#### CD- Rom Circuit Board Color:

Green

#### Ribbon Cables:

Model 2 Consoles have 21 Pin Ribbon Cables.

#### IC PIN Chip:

Model 2 Consoles with JVC Drives have 64 pin or 32 Pin IC chip.



(May not have a white stripe around the border of the drive).

If you have a Model 2 Console with a JVC drive...

[www.consolesbyvga.com](http://www.consolesbyvga.com)

## Step 4 – Identifying Drive Type

### Model 2 Saturn: - SANYO DRIVE:

#### Console Buttons:

Round Power and Reset Buttons.

#### CD- Rom Circuit Board Color:

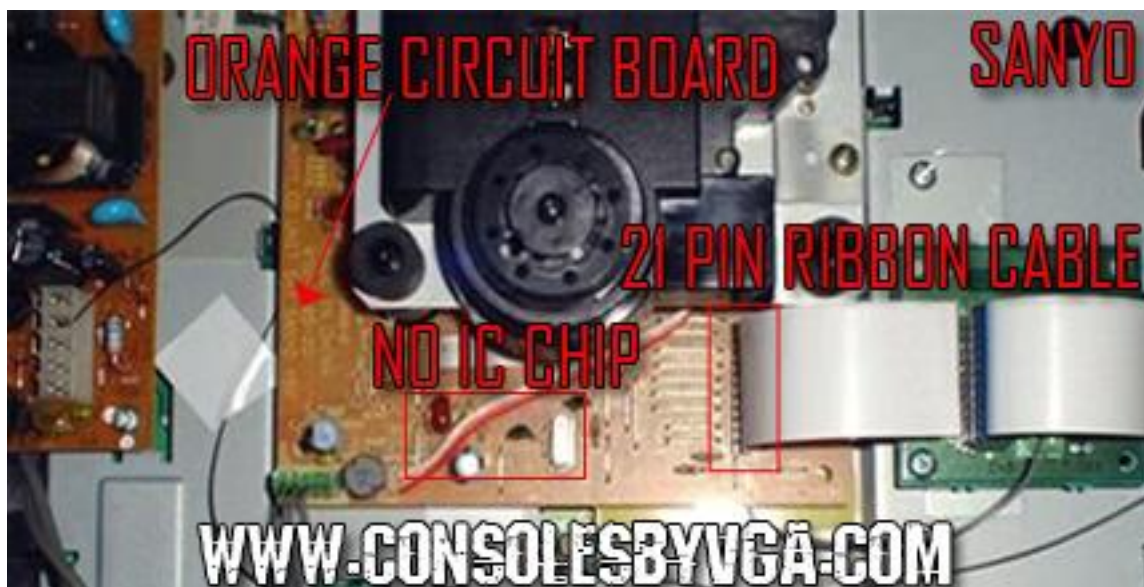
Orange

#### Ribbon Cables:

Model 2 Consoles have 21 Pin Ribbon Cables.

#### IC PIN Chip:

Model 2 Consoles with Sanyo Drives no IC Chip



If you have a Model 2 Console with a SANYO drive...

Download: PhantomUniversal\_Model2\_SANYO\_Install Guide.pdf



With this information you know have everything you need to know to get your Phantom Universal mod chip installed correctly.

At this point, you should download the corresponding Installation guide for your specific model console and drive type.